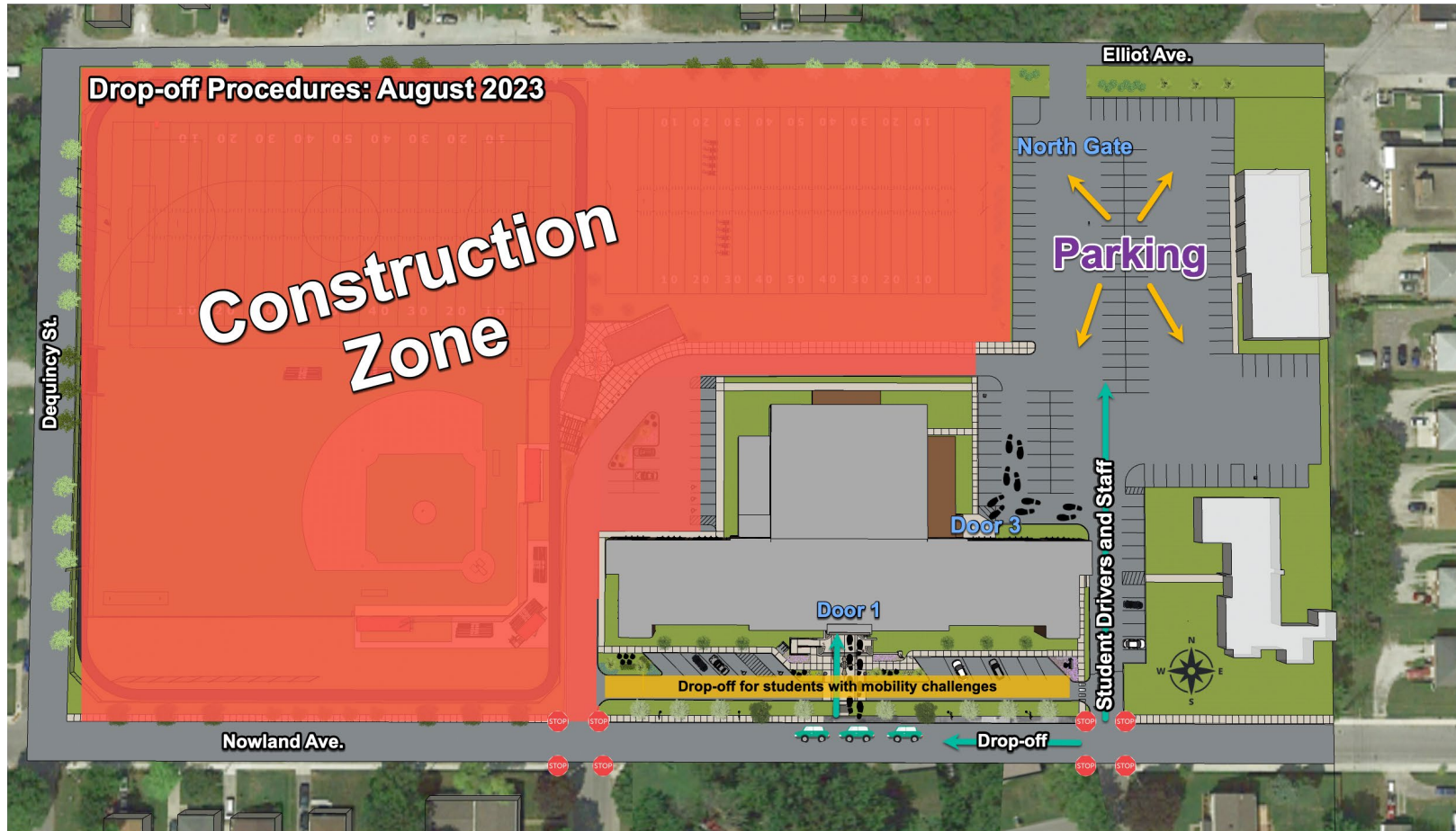




STUDENT ARRIVAL PROCEDURES

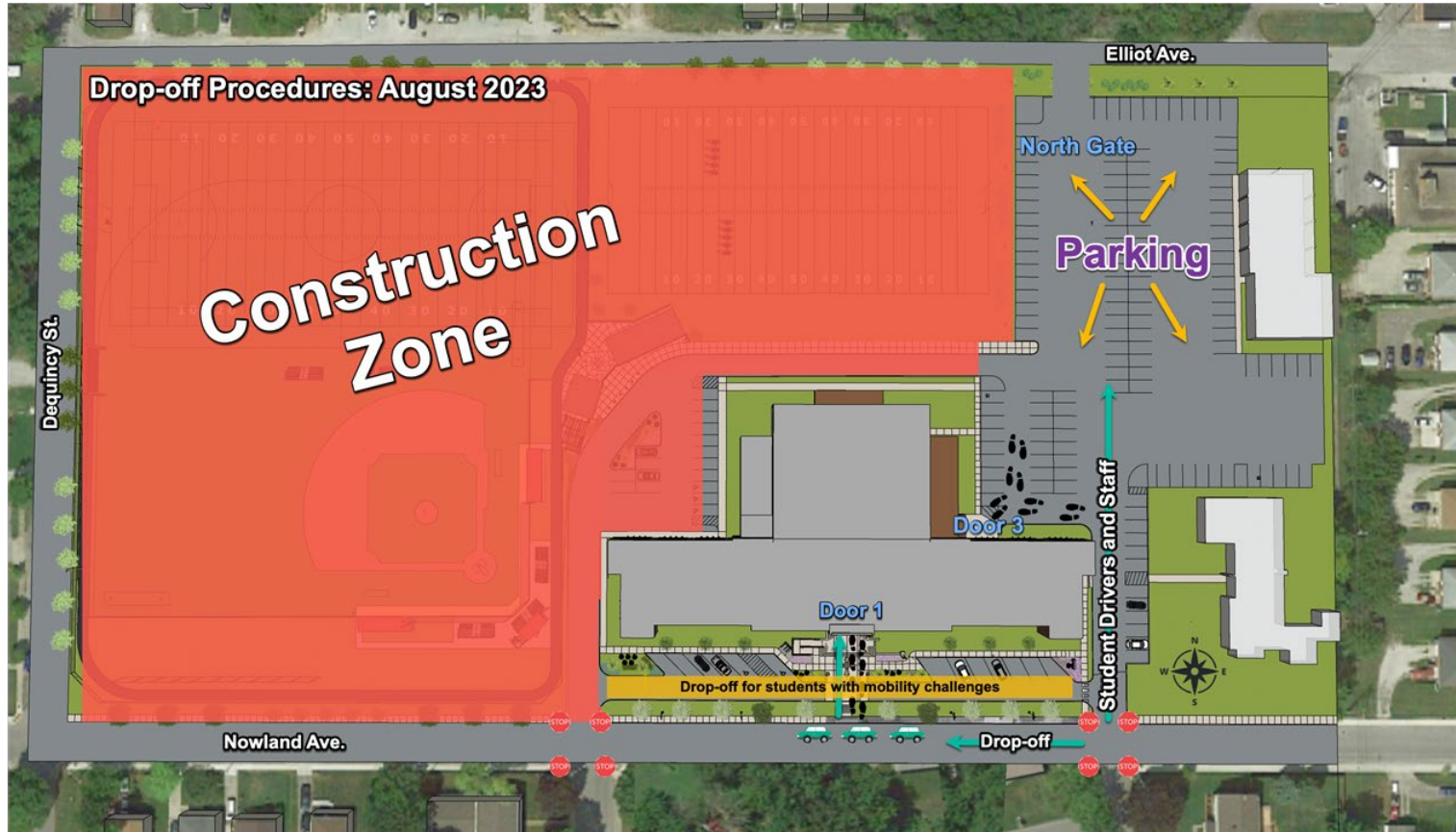


- Students who drive themselves to school will enter campus via the east driveway (at the intersection of Nowland and Bancroft), park in the east parking lot, and enter the building at Door #3 at the east gym lobby.
- Students who are dropped off will be dropped off on Nowland Avenue at the new steps in the middle of the front yard and enter the building at Door #1 on Nowland Avenue.



**SCECINA
MEMORIAL
HIGH SCHOOL**

STUDENT ARRIVAL PROCEDURES



The construction project includes a driveway across the current front yard of the property. The two purposes of this driveway are to connect to new visitor parking spaces at Door #1 and to serve as a drop-off point for a student in a wheelchair, on crutches, or facing similar mobility challenges.

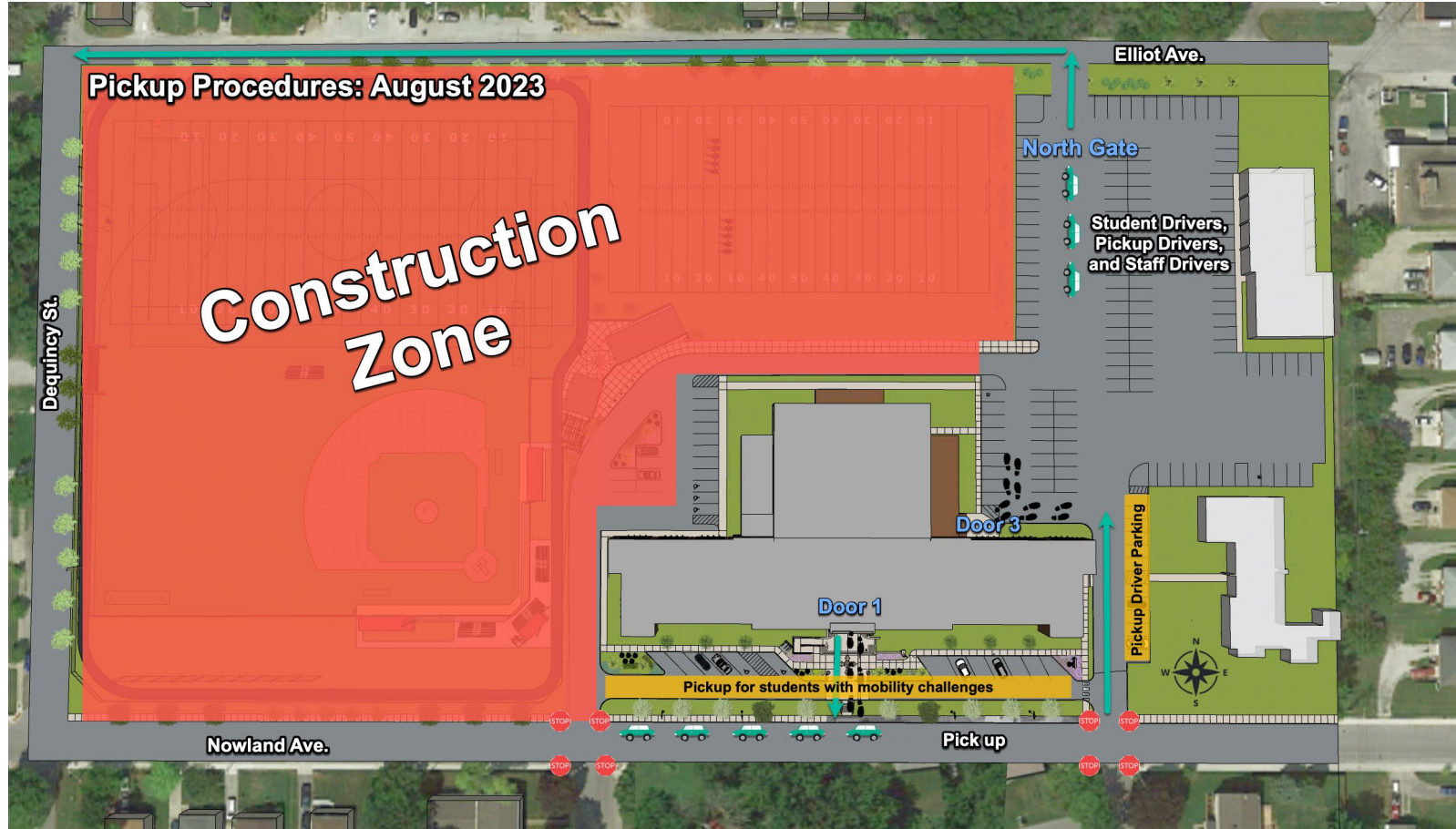
These students will be able to use the new accessibility ramp that provides access to the main floor of the building.

For traffic safety reasons, this driveway will not serve as a drop-off point for any other students.



**SCECINA
MEMORIAL
HIGH SCHOOL**

STUDENT DEPARTURE PROCEDURES



- During the first hour after the school day, student drivers will exit via the north gate as was the case during the latter weeks of last school year, and then turn left on to Elliott Street to avoid a left turn scenario across traffic on Emerson Avenue.
- Family members who are picking up students may either (1) park in the current visitor parking spaces between the school building and St. Francis Hall, and then exit via the north gate, or (2) park on Nowland Avenue facing the appropriate traffic direction, and then depart accordingly and safely.